

# المصرية النادرة

Extraordinary Cart



EXTRAORDINARY CART

Headquarters: Riyadh Business Front, Building number S 4

contact: [Info@extraordinarycart.com.sa](mailto:Info@extraordinarycart.com.sa) - 920033466

website: [www.extraordinarycart.com.sa/en/](http://www.extraordinarycart.com.sa/en/)

## ROYAL-11



# WHAT ARE THE FEATURES

- 1 Pedals**  
Integrating acceleration, brake and parking together. Braking distance is adjustable.
- 2 LAMINATED WINDSHIELD**  
UNIQUELY RESISTANT TO THE ELEMENTS AND WILL NOT RUST OR CORRODE OVER TIME
- 3 LED HEADLIGHTS**  
HIGH BEAM-LOW BEAM-DAYTIME RUNNING LIGHT-TURN SIGNALS
- 4 WHEEL**  
14" ALLOY WHEEL RIMS WITH COLOR MATCHING
- 5 INJECTION MOULDED CANOPY**  
UNIQUELY RESISTANT TO THE ELEMENTS AND WILL NOT RUST OR CORRODE OVER TIME
- 6 STORAGE**  
AUTOMOTIVE STYLE DASH WITH ROOM FOR MORE ACCESSORIES
- 7 STEERING WHEEL**  
AUTOMOTIVE, MULTIFUNCTIONAL STEERING WHEEL
- 8 USB PORT**  
USB CHARGERS KEEP YOU CHARGED ON THE GO
- 9 DIGITAL SPEEDOMETER**  
WITH EXCELLENT LED WARNING LIGHTS, GAUGES BATTERY POWER, AND SAVES RIDE TIME AND LENGTH
- 10 REAR FLIP SEAT**  
THE REAR SEAT ALSO FLIPS OUT TO REVEAL A RUGGED BED TEXTURE AND SPACE FOR MOVING YOUR FAVORITE GEAR
- 11 COMFORT**  
UNIQUE STYLE, COMFORT GRIP, AND ENOUGH LEG ROOM TO ENJOY YOUR RIDE AND DRIVING EXPERIENCE
- 12 SEAT**  
WIDEST, MOST ERGONOMIC CONTOURED SEAT







## GIVES YOU QUALITY AND RELIABILITY

Our 4 Passengers EXOC-C10 golf cart is one of the best personal transportation vehicles constructed from aluminum frame, Your ROYAL-11 golf cart from Extraordinary Cart is uniquely resistant to the elements and will not rust or corrode over time. ROYAL-11 Golf Cart has a High-powered motor and electronic controller to improve hill-climbing speed, performance, torque, and efficiency.





# ***LED LIGHTING***

Our personal transportation vehicles come standard with LED lights: high beams, low beams, daytime running lights, turning signals and brake lights for a brighter ride. Our lights are more powerful with less drain on your batteries, and deliver a 2-3 times wider field of vision than our competitors, so you can enjoy the ride worry-free, even after the sun goes .



# ***LAMINATED WINDSHIELD***

With a rotary switch, the tilt angle of the laminated windshield is easy to be adjusted. Then just enjoy the cool breeze skating through tilted windshield.

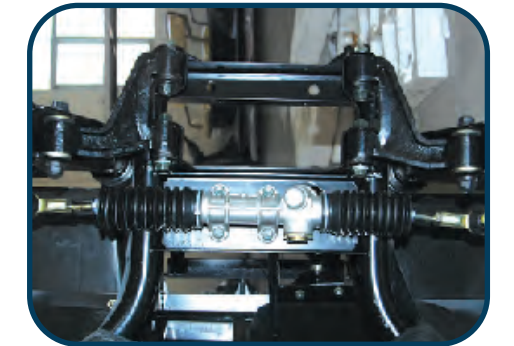


# ***FOUR-WHEEL STRUCTURE***



## **Shock absorber**

Adopting automobile steering system design, independent suspension system



## **Suspension system**

Independent shock absorber Make people more comfortable



## **SMOOTH RIDE**

Our new tires are smooth and quiet With a sleeker tread



## **Chassis**

High tensile steel welding structure, and anti-rust performance



## DETAILS



### Dual USB Port

With a dual USB port on your carts, you can provide golfers that added touch of keeping their phones charged



### Explicitly Digital Speedometer

With Excellent LED warning lights, Gauges battery power, and Saves ride time and length.



### STORAGE COMPARTMENT

dual-sized storage compartment, room for more items like keys and mobile devices.



### 1-SEAT SLIDE BAR

Move the seats forward or backward.

### 2-BACKREST TILT

Adjust the tilt angle of the backrest. *(Customized Feature)*

### 3-RETATABLE ARMREST

It can rotate in 90 degree and provide an ergonomic support for your cantilever elbows.

### 4-SAFETY BELT

with three-point safety belts in the front seats and two-point safety belts in the rear seats. *(Customized Feature)*



### Front and Rear

1080P resolution front camera  
Wide-angle front (170°) and rear (130°) camera help eliminate the blind spots of your vision



### CRAFTED TO OUTLAST

As one of the only personal transportation vehicles constructed from an aircraft-quality aluminum frame



### CANOPY

Provides protection against the sun and rain. Its color is consistent with the vehicle body.

## CUSTOMIZE



### Police Lamp



### Battery Tray



### Music Player



### 6-8-12 Volt batteries



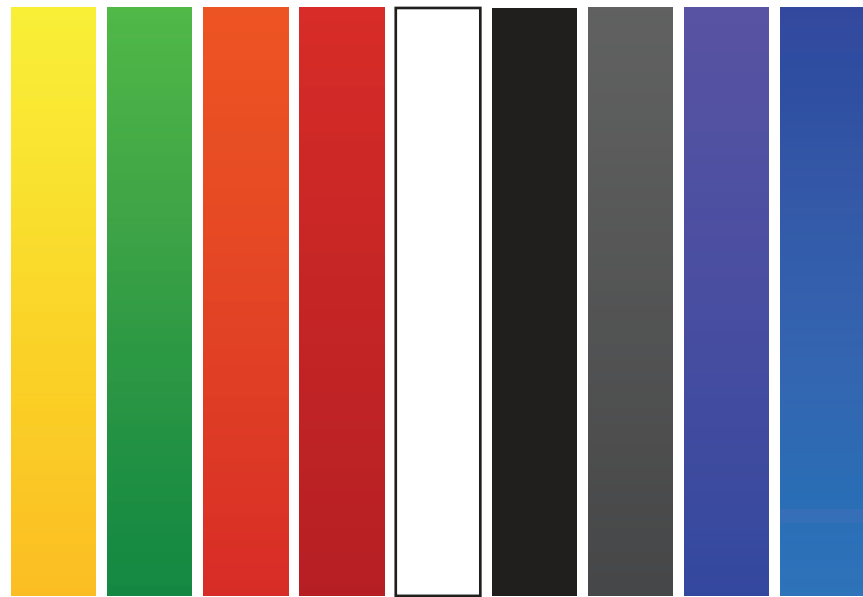
### Solar Panels



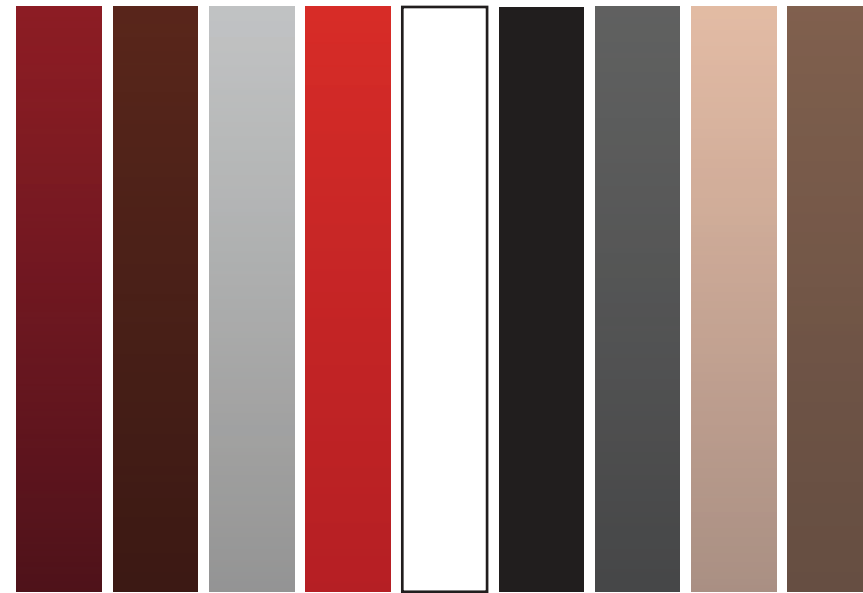
### Sunshine Cover

# COLOR OPTIONS

## BODY COLORS



## LEATHER SEATS COLORS



# DIMENSIONS

Power						
<b>Motor</b>	<b>Batteries</b>	<b>Charger</b>	<b>Transaxle</b>	<b>Overall Size</b>	<b>Ground Clearance</b>	<b>Tread Distance</b>
48V/4KW AC system	8v*6 Maintenance free Battrey	48-volt on-Board Charger	16:01	4650*1210*1900mm	110 mm	Front 900 / rear 1000 mm
<b>Net Weight</b>	<b>Loading</b>	<b>Forward speed</b>	<b>Braking dist</b>	<b>Turning radius</b>	<b>Climbing Ability</b>	<b>Maximum Mileage</b>
550 kg	4 People	25km\h	6 m	5:1 m	20 %	100km Per-Charge
Steering & Suspension						
<b>Steering</b>	<b>Front Suspension</b>		<b>Rear Suspension</b>		<b>Turning Radius</b>	
Self-compensating 'Rack & steering Pinion'	Independent front suspension		Independent rear suspension		2.9 Meters	
Brakes						
<b>Brakes</b>		<b>Park Brake</b>		<b>Braking Distance</b>		
Self-Adjusting, Four Wheel dics brake + EMB		Foot actuated, 3-position		Less than 6 Meters		
Body & Tires						
<b>Body and Finish</b>	<b>Tires</b>	<b>LxWxH</b>	<b>Wheelbase</b>	<b>Ground Clearance</b>	<b>Tread</b>	
Painted TPO	(205x50 -10 ) Tubeless	4280*1200*1880 mm	12 31:1	110mm	Front 900/Rear1000mm	
<b>Total Vehicle Weight</b>		<b>Frame Type</b>		<b>Floor</b>		<b>Loading</b>
550 kg		Aluminum		Resin synthesis anti-slip rubber mat		4 Passengers





Click Down To

CALL US



920033466

VISIT US



Extraordinarycart.com.sa

FOLLOW US

